

## Section L – Craft Work

**Steward:** Elaine Quick (0428 316 257)

Two entries allowed per person per class.

**Entry Fees:** Pre & Primary School age free – all others \$1 per entry capped at \$20

Points for aggregate in Section L are awarded as follows: First: 3 points, Second: 2 points.

All exhibits must be handed to a steward and be in place by 9.30am.

Judging to commence at 10.00am.

Prizes, 1<sup>st</sup> place \$2, 2<sup>nd</sup> place \$1, except where otherwise stated.

Prize money will be given out at the Secretary's Office from 4.00pm, on collection of exhibits. Prize ticket must be produced.

Needlework etc, must be the work of the exhibitor. No commercial entries allowed.

No work to be exhibited that has won two first prizes at Warracknabeal in Section L.

In the event of an aggregate tie, the judge will be asked to make a decision.

In the knitting classes, machine-knitted waists, cuffs, and neckbands allowed.

Seams may be hand or machine sewn. Crochet edges allowed on knitting.

**Entry tickets to be either sewn on or attached with safety pin.**

**No sewing pins allowed.**

**Article or garment not to have been worn or used.**

### 5 Years & under:

1. Pop stick article.
2. Decorated rock.
3. Decorated wooden spoon.
4. Decorated paper plate.
5. Decorated boot or shoe.
6. Sock puppet.
7. Unspecified Article.

**Aggregate Prize Donated by Wendy Lehmann**



### 8 Years & under:

8. Decorated rock.
9. Article made from milk bottle tops.
10. Pop stick article.
11. Handmade jewellery.
12. Decorated boot or shoe.
13. Origami creation.
14. Decorated wooden spoon.
15. Page of colouring in - 1<sup>st</sup> prize donated by Willenabrina CWA
16. Unspecified article.

**Aggregate Prize donated by Elaine Quick**



**12 Years & under:**

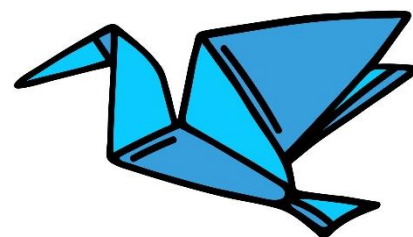
17. Page of colouring in.
18. Decorated boot or shoe.
19. Sock or box puppet.
20. Handmade pompom using wool or acrylic yarn.
21. Handmade jewellery.
22. Handmade card.
23. Scrapbooking page (in plastic pocket).
24. Novelty item.
25. Origami creation.
26. Unspecified article.

**Aggregate Prize donated by Gary & Julie McLean.**

- **The most outstanding exhibit from a Primary School student will be entered in the WASA Competition for article of craft by a Primary School student (sections 8-28).  
(Local prize is a \$20 gift voucher from Feet First Footwear) (Group level prize \$20).**

**Secondary College Students:**

27. Origami creation.
28. Diamond Dotz, (framed).
29. Article of woodwork/metal work
30. Machine cut project (e.g., Cricut).
31. 3D printed article. (First prize \$30, second prize \$20 donated by 'The Solution Centre')
32. Unspecified article



- **Aggregate Prize donated by Presh Beauty.**

- **The most outstanding exhibit from a Secondary College Student will be entered in the WASA Competition for article of craft by a Secondary College student. (Sections 29-35)  
(Local prize is a \$20 gift voucher from S & D Stronach) (Group level prize \$20).**